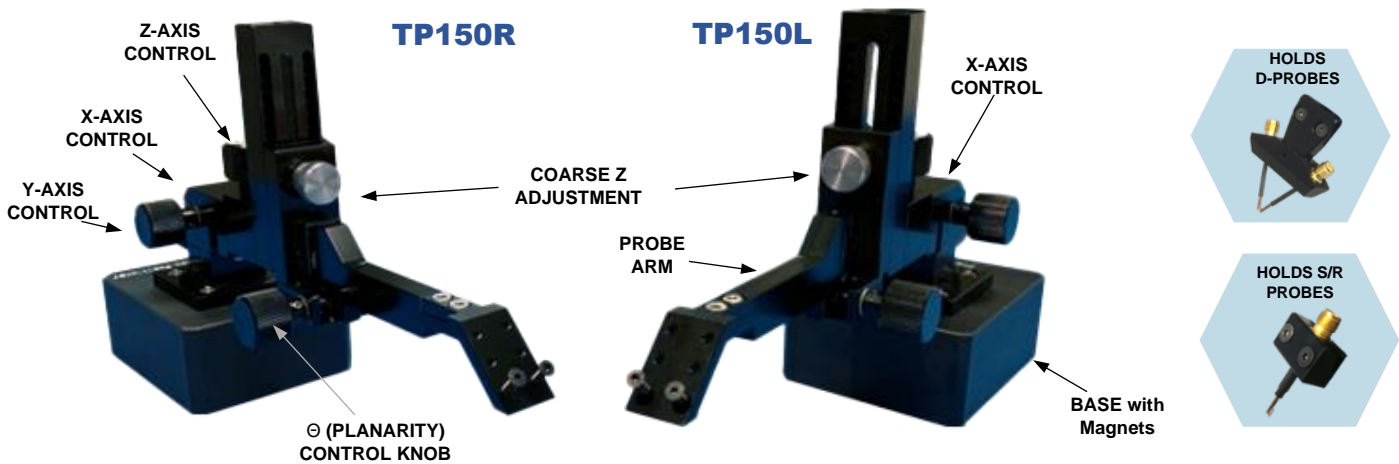


# PRECISION POSITIONER TP150

THE COMPACT, VERSATILE, HIGH-PRECISION POSITIONER FOR RF & PI PROBING



TP150 is designed to hold rugged PacketMicro probes. It allows a user to probe printed circuit boards with small geometry precisely. Its high-precision XYZ stage and long probe arm with planarization ( $\theta$ ) control make it ideal for probing printed-circuit boards in a wide range of RF and signal-integrity measurements.

- High-precision XYZ-stage and  $\Theta$  control allow probes to land on test points accurately and firmly.
- Front probe arm can be adjusted to probe extra tall circuit boards or boards with components on both sides.
- Magnetic base allows easy and quick rearrangement of test setup.
- Universal probe adapter holds most Keysight and Tektronix test probes.

## SPECIFICATIONS

XYZ-axis travel:	16 mm with 500 $\mu\text{m}/\text{turn}$ (50 TPI)
Resolution	5 $\mu\text{m}$
Height coarse adjustment:	5 mm/step (14 steps)
$\Theta$ (Planarity) control:	$\pm 10^\circ$ with 2.5 $^\circ/\text{turn}$ and 0.025 $^\circ$ resolution
Dimensions/Weight	(LxWxH) 266x76x108mm (10.5"x3"x4.3" in.) / 2.7 kg (5.96 lb.)
Base	Metal with magnets and anti-static rubber

## PART NUMBERS

TP150L	Precision Positioner with XYZ $\theta$ control (left-handed) with PacketMicro probe adapter
TP150R	Precision Positioner with XYZ $\theta$ control (right-handed) with PacketMicro probe adapter
TP150LU	Precision Positioner with XYZ $\theta$ control (left-handed) with Universal UA16 adapter
TP150RU	Precision Positioner with XYZ $\theta$ control (right-handed) with Universal UA16 adapter
UA16-TP150	Universal adapter, size 25x27x35 mm, opening 4-16 mm, 0.07 kg (0.15 lb.)

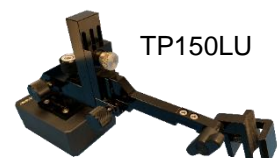
## ADAPTER



**Universal Adapter (UA16-TP150)**

UA16 Adapter can be mounted on TP150 to hold large oscilloscope and RF probes.

- Opening: adjustable 4– 16 mm



TP150LU

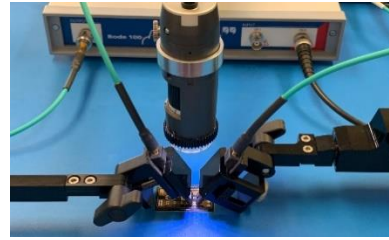
## APPLICATIONS

### RF Probing



S-Parameter measurements of a RF PCB with TP150L, TP150R, and S-Probes.

### PDN Probing



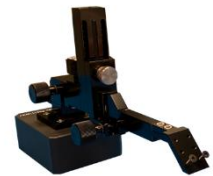
mΩ PDN measurements with TP150LU, TP150RU, and Picotest probes.

## TP250/TP150 COMPARISON



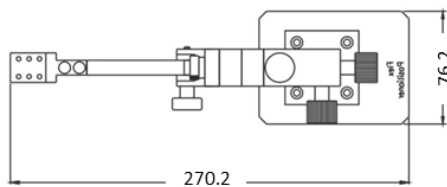
TP250LB

	TP250	TP150
<b>Probe Compatibility</b>	Microprobes & PacketMicro Probes	PacketMicro Probes
<b>Probe Fixture Compatibility</b>	All PacketMicro fixtures	Standalone only
<b>Large XY control Knobs</b>	Yes	No
<b>Smooth XYZ adjustment</b>	Excellent	Typical
<b>Base Magnetic Lock</b>	Yes	No
<b>Accessories</b>	Many	Few

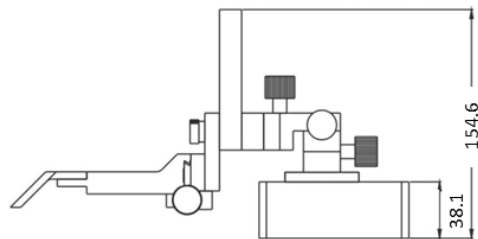
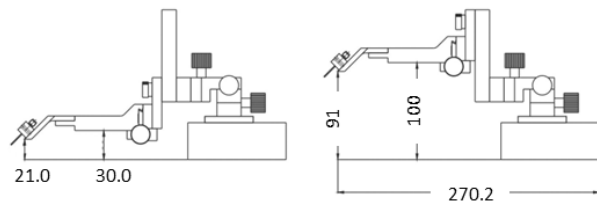


TP150L

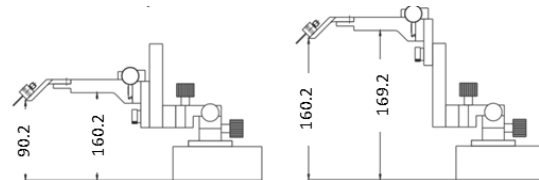
## TP150 MECHANICAL DIMENSIONS (mm)



### Probe arm in normal positions



### Probe arm in reverse positions



Total Coarse Height Adjustment: 70 mm  
Each Step: 5 mm

