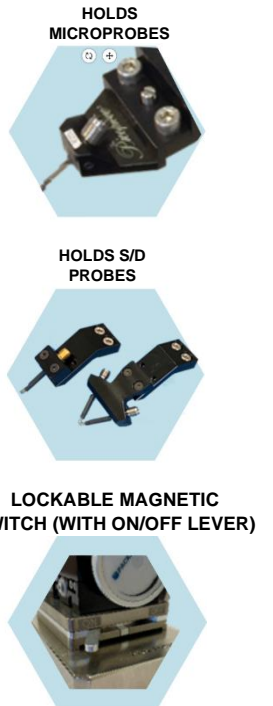
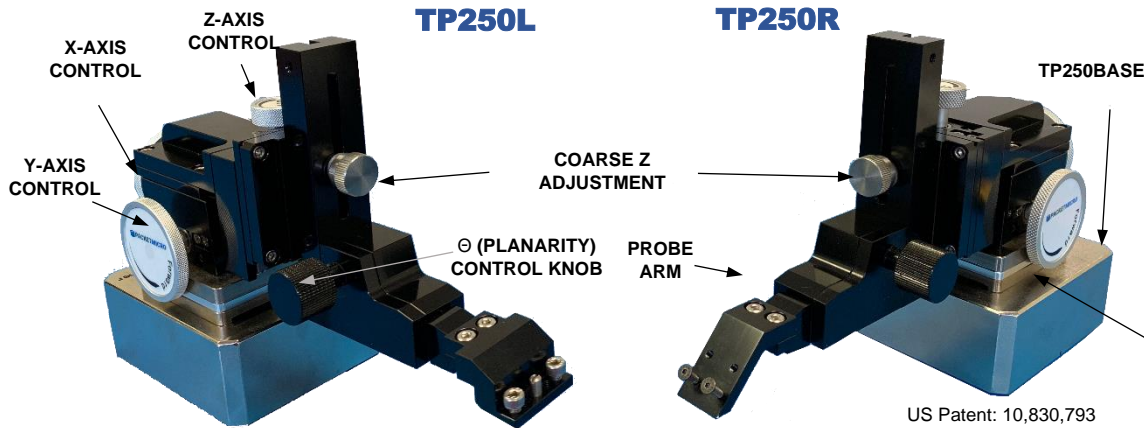


# PRECISION POSITIONER TP250

THE VERSATILE, HIGH-PRECISION POSITIONER



\* 1 adapter for microprobes and 1 adapter for PacketMicro probes included.

**Video:** [https://packetmicro.com/Videos/PacketMicro\\_TP250\\_Positioner.mp4](https://packetmicro.com/Videos/PacketMicro_TP250_Positioner.mp4)

TP250 probe positioner can be used in all PacketMicro Do-It-Yourself (DIY) horizontal and vertical probe stations. Its high-precision XYZ stage with magnetic lock at the base and long probe arm with  $\theta$  control make it ideal for probing with microprobes and rugged PacketMicro probes in a wide range of RF and signal-integrity measurements. TP250 has patented planarity ( $\theta$ ) control mechanism, which does not use the typical spring-loaded design, to avoid potential damage to the test probe mounted on its probe adapter. The extra-large control knobs for XY axes ensure smooth, fast placement of the test probe.

- Rugged, ergonomic design
- Easy, quick rearrangement of positioner with a lockable magnetic switch
- Coarse probe arm height movement without tool
- High-quality material and precision design ensure accurate and repeatable measurements
- Adapters for holding typical microprobes, PacketMicro's rugged probes, and scope probes
- Special 90° arms for different probing orientations
- Work with all PacketMicro horizontal and vertical probe fixtures

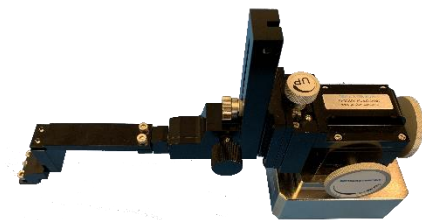
SPECIFICATIONS		TP250	TP250 Base	
XYZ-axis travel:	16 mm with 500 $\mu\text{m}/\text{turn}$ (50 TPI), x/y-axis control knobs		<b>Mounting</b>	Metal with magnets & rubber
Resolution	5 $\mu\text{m}$			
Height coarse adjustment:	5 mm/step (14 steps)			
$\theta$ (Planarity) control:	$\pm 10^\circ$ with 2.5°/turn and 0.025° resolution		<b>Dimensions</b>	4"x3"x1.5" in.
Dimensions/Weight	(LxWxH) 228x76x108 mm, 9x3x4.3 in./ 2.86 lb. (1.3kg)		<b>Weight</b>	2.3 kg (5 lb.)

PART NUMBERS	
TP250L	Precision Positioner with XYZ $\theta$ control (left-handed), 2.3 kg (5 lb.)
TP250LB	Precision Positioner with XYZ $\theta$ control (left-handed) with base, 3.63 kg (8 lb.)
TP250R	Precision Positioner with XYZ $\theta$ control (right-handed), 2.3 kg (5 lb.)
TP250RB	Precision Positioner with XYZ $\theta$ control (right-handed) with base, 3.63 kg (8 lb.)
TP250-ARM-AL	Left-handed TP250 arm with a 90-degree adapter head, 0.36 kg (0.8 lb.)
TP250-ARM-AR	Right-handed TP250 arm with a 90-degree adapter head, 0.36 kg (0.8 lb.)
TP250-AUA16	Universal adapter, size 25x27x35 mm, opening 4-16 mm, 0.07 kg (0.15 lb.)
TP250-AVA60	Variable-angle adapter (45, 60, or 75 degree), 0.01 kg (0.05 lb.)
TP250ES01	Set includes 3 horizontal extenders (1", 2", 3") and 3 vertical extenders (10mm, 18mm, 25mm)
TP250-ABR45	45-degree bracket for TP250 Positioner, size 53 mm x 32 mm x 9 mm, 19 gm

## TP250 ACCESSORIES



TP250 Probe arm can be adjusted for different orientations and positions without using any tool.



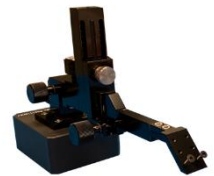
TP250ES01 extends the operating reach of the TP250 positioner.

## TP250/TP150 COMPARISON



TP250LB

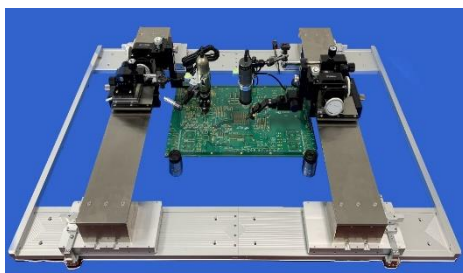
	TP250	TP150
<b>Probe Compatibility</b>	Microprobes & PacketMicro Probes	PacketMicro Probes
<b>Probe Fixture Compatibility</b>	All PacketMicro fixtures	Standalone only
<b>Large XY control Knobs</b>	Yes	No
<b>Smooth XYZ adjustment</b>	Excellent	Typical
<b>Base Magnetic Lock</b>	Yes	No
<b>Accessories</b>	Many	Few



TP150L

## APPLICATIONS

### LARGE PCB PROBING



*Large-PCB Probe Station (HPS24)*

HPS24 probe station is designed for probing large printed-circuit boards. It can be configured for 1-sided or 2-sided probing.

### BENCHTOP RF PROBING



*Horizontal probing of RF Module*

This simple, easy-to-use probe station with probes are ideal for testing antennas, RF modules and PCBs.

### 2-SIDED PCB PROBING



*2-Sided Probe Station (VPS10)*

VPS10 probe station makes 2-sided probing easy and is designed for laboratories with limited space.